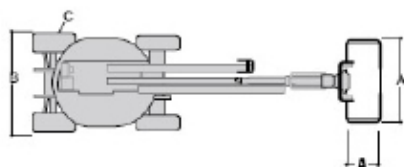
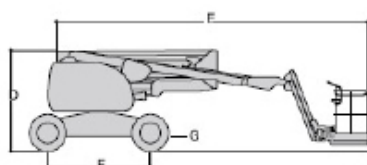
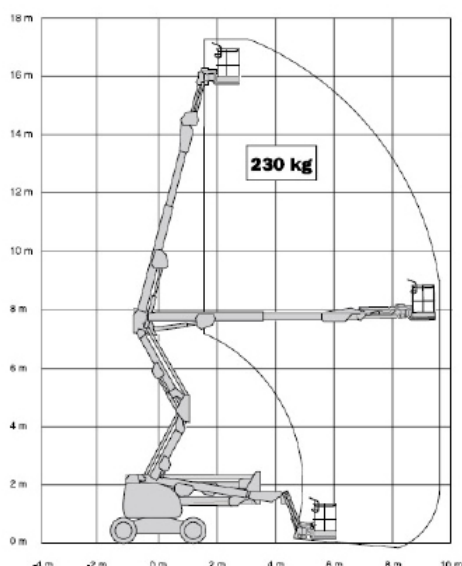


ELEVATED WORK PLATFORM HIRE

## SPECIFICATION SHEET

# KNUCKLE BOOM

17m/51ft DIESEL



## SPECIFICATIONS

### MEASUREMENTS

Working height maximum	17.681 m
Platform height maximum	15.81 m
Horizontal reach maximum	9.48 m
<b>A</b> Platform length	0.76 m
<b>A</b> Platform width	1.83 m
<b>D</b> Height - stowed	2.30 m
<b>E</b> Length - stowed	7.68 m
<b>B</b> Width	2.30m
<b>F</b> Wheelbase	2.34 m
<b>G</b> Ground clearance	0.36 m

### PRODUCTIVITY

Lift capacity	230 kg
Platform rotation	180°
Vertical jib rotation	145°
Turntable rotation	360°
Turntable tailswing	zero
Drive speed - stowed	7.2 km/h
Gradeability - 4WD - stowed	45%
Turning radius - inside	2.0 m
Turning radius - outside	5.0m
<b>C</b> Tyres - Foam filled	12x165

### WEIGHT

Weight	7685 kg
--------	---------

