

# DURALIFT

ELEVATED WORK PLATFORM HIRE

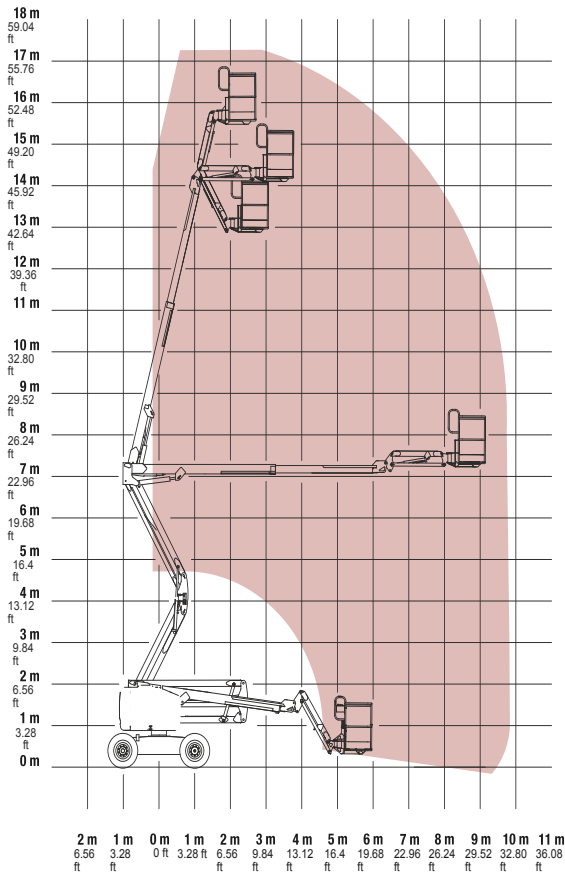
PHONE 1300 580 580

## SPECIFICATION SHEET

5 1 f t D I E S E L

# KNUCKLE BOOM

### RANGE OF MOTION Z™-51/30J RT



## Specifications

MODEL	Z™-51/30J RT	
MEASUREMENTS	Metric	US
Working height maximum*	17.62 m	57 ft 3 in
Platform height maximum	15.62 m	51 ft 3 in
Horizontal reach maximum	9.25 m	30 ft 4 in
Up-and-over clearance at primary arm	7.47 m	24 ft 6 in
<b>A</b> Platform length	0.76 m	2 ft 6 in
<b>B</b> Platform width	1.83 m	6 ft
<b>C</b> Height - stowed	2.16 m	7 ft 1 in
<b>D</b> Length - stowed	7.50 m	24 ft 6 in
<b>E</b> Width	2.29 m	7 ft 6 in
<b>F</b> Wheelbase	2.03 m	6 ft 8 in
<b>G</b> Ground clearance - centre	0.39 m	1 ft 3.5 in

PRODUCTIVITY		
Lift capacity	227 kg	500 lbs
Platform rotation	160°	160°
Vertical jib rotation	135°	135°
Turntable rotation	355° non-	
Turntable tailswing	zero	zero
Drive speed - stowed	8 km/h	5 mph
Drive speed - raised**	1.1 km/h	0.6 mph
Gradeability - 4WD - stowed***	45%	45%
Turning radius	- inside	1.68 m
Turning radius - outside	4.50 m	14 ft 9 in
Controls	12V DC proportional	
Tyres - RT Lug - Foam filled	355/55 D625	

POWER		
Power source	Deutz LO3i 2011 3 cylinder diesel 48 hp	
Auxiliary power unit	12V DC	12V DC
Hydraulic tank capacity	90.8 L	24 gal
Fuel tank capacity	64.4 L	17 gal

WEIGHT****		
	7,212 kg	15,900 lbs

STANDARDS		
CE	P -10-611-	

\* The metric equivalent of working height adds 2 m to platform height. U.S. adds 6 ft to platform height.  
 \*\* In lift mode (platform raised), the machine is designed to operate on firm, level surfaces only.  
 \*\*\* Gradeability applies to driving on slopes. See Operator's Manual for details regarding slope ratings.  
 \*\*\*\* Weight will vary depending on options and/or country standards.

